

Ormskirk Paediatric Emergency Department Monthly Bulletin: January to December 2012

This bulletin provides a breakdown of all injury attendances at Ormskirk Paediatric Emergency Department (ED) between January and December 2012.¹

Between January and December 2012 there were 5,449 ED attendances. Injury attendances peaked in May (n=623), with December (n=256) having the least number of injury attendances (**Figure 1**).

Figure 2 illustrates injury attendances by gender. For all months there were more male (59%) injury attendances than female presenting at Ormskirk Paediatric ED.

Figure 3 presents the age group of injury attendances. Across the whole year almost two-fifths (38%) of injury attendances were made by people aged between 10 and 14 years.

Table 1 details the injury group of injury attendances. The majority of injury attendances

were classified as other injury (73%). Just over one-fifth (21%) were recorded as sports injury and 4% road traffic collisions (RTCs).

Table 2 illustrates the source of referral for patients presenting with injuries. The majority (93%) of injury attendees were recorded as other. **Table 3** presents injury attendances by location of incident. Nearly four in ten of all injury locations were recorded as in a public place (37%) or in the home (33%). **Table 4** shows the disposal method of injury attendances. Seven in ten (70%) of attendees were discharged requiring no follow-up.

Assault attendees presenting at the Ormskirk ED between January and December 2012 were mainly male (67%) and the primary location of assault was in a public place (62%). The majority of ED assault attendances were aged 15 and 29 years (n=38; 53%) and 47% were aged between 5 and 14 (n=34).

Figure 1: Total number of injury attendances by month, January to December 2012

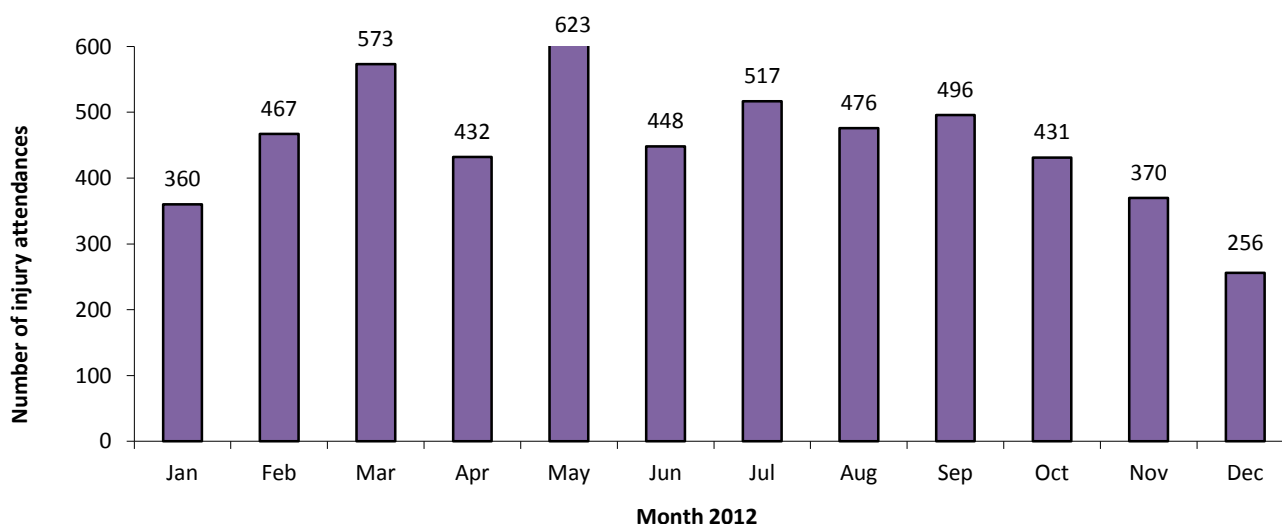


Figure 2: Gender of injury attendances by month, January to December 2012

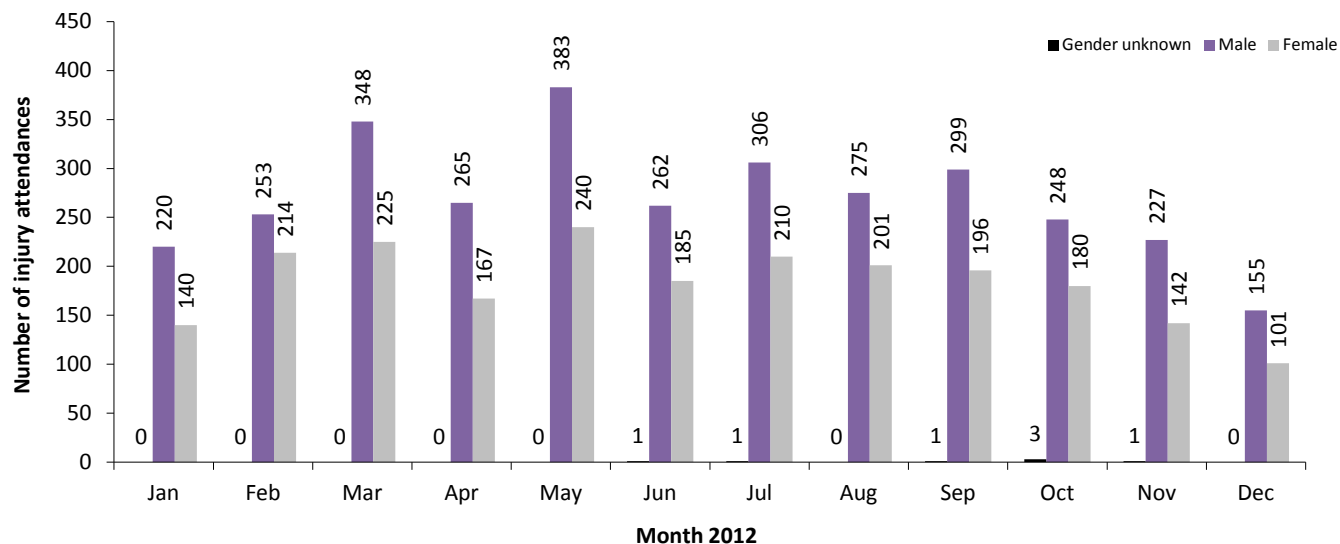


Figure 3: Age group of injury attendances by month, January to December 2012

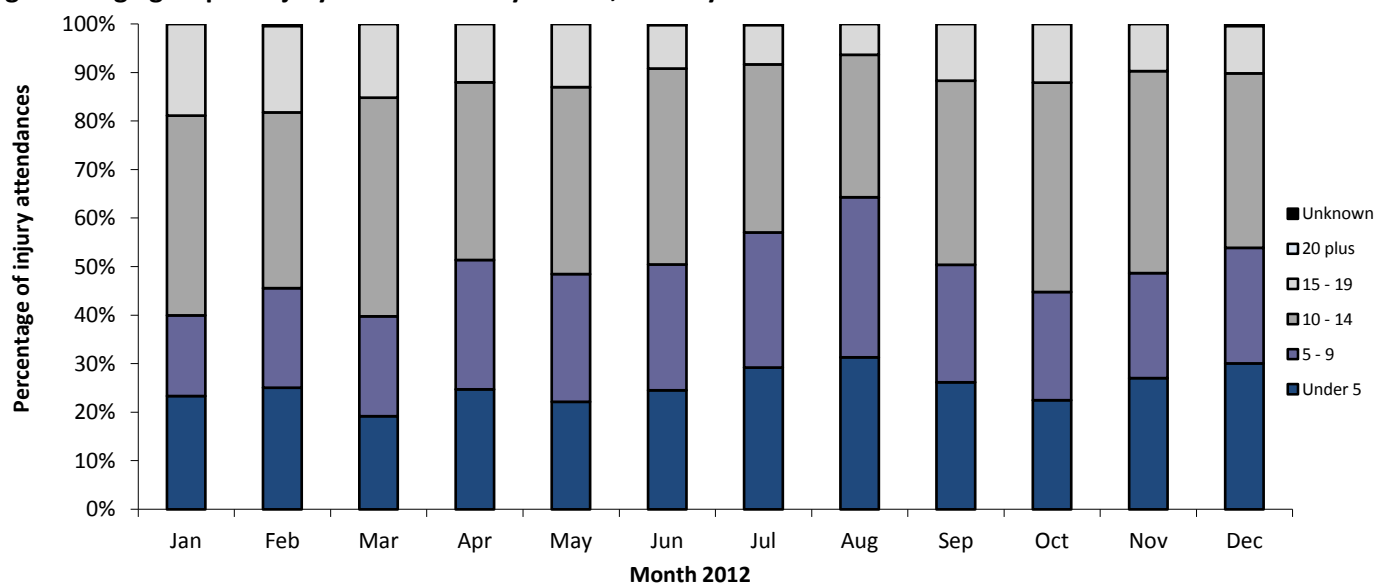


Table 1: Injury attendances by injury group and month, January to December 2012^{2,3}

Injury group	Jan	Feb	Mar	Apr	May	Jun	Jul	Aug	Sep	Oct	Nov	Dec	Total	%
Other injury	252	327	380	321	450	334	414	415	356	285	257	187	3978	73
Sports injury	78	99	163	78	143	87	83	36	112	114	88	41	1122	21
RTC	18	23	20	19	<22	<17	<15	<15	<22	18	18	20	222	4
Assault	7	6	5	8	7	7	5	7	6	7	***	***	72	1
Deliberate self-harm	5	12	5	6	***	***	***	***	***	7	***	***	55	1
Total	360	467	573	432	623	448	517	476	496	431	370	256	5449	100

Table 2: Injury attendances by source of referral and month, January to December 2012⁴

Source of referral	Jan	Feb	Mar	Apr	May	Jun	Jul	Aug	Sep	Oct	Nov	Dec	Total	%
Other	334	430	540	402	579	427	486	441	461	406	334	235	5075	93
Health care provider: same or other	9	11	15	19	25	8	12	23	18	9	12	5	166	3
Emergency services	***	***	9	***	5	***	8	***	8	6	15	6	72	1
Self referral	***	12	6	***	***	6	***	5	***	***	***	5	49	1
Educational establishment	***	6	***	***	6	***	5	***	***	***	6	***	41	1
GP	6	***	***	***	5	***	***	***	***	***	***	***	30	1
Unknown	***	***	***	***	***	***	***	***	***	***	***	***	7	0
Police	***	***	***	***	***	***	***	***	***	***	***	***	<8	0
Local authority social services	***	***	***	***	***	***	***	***	***	***	***	***	***	0
Total	360	467	573	432	623	448	517	476	496	431	370	256	5449	100

Table 3: Injury attendances by location of incident and month, January to December 2012⁵

Location	Jan	Feb	Mar	Apr	May	Jun	Jul	Aug	Sep	Oct	Nov	Dec	Total	%
Public place	117	159	228	199	231	166	204	218	201	134	99	87	2043	37
Home	115	160	144	156	202	159	192	193	147	121	123	90	1802	33
Educational establishment	109	133	182	50	138	88	63	10	99	133	125	56	1186	22
Other	19	15	19	27	52	35	58	55	49	43	23	23	418	8
Total	360	467	573	432	623	448	517	476	496	431	370	256	5449	100

Table 4: Disposal method of all injury attendances by month, January to December 2012

Disposal method	Jan	Feb	Mar	Apr	May	Jun	Jul	Aug	Sep	Oct	Nov	Dec	Total	%
Discharged - no follow-up	272	356	389	297	443	345	392	320	343	272	242	150	3821	70
Referred to fracture clinic	43	60	87	69	89	53	54	67	76	64	43	27	732	13
Discharged – follow-up by other health care provider	***	<8	14	13	10	7	9	26	26	48	34	39	237	4
Referred to other health care professional	20	22	30	13	33	17	17	18	12	10	6	9	207	4
Admitted to hospital bed	10	12	17	15	20	11	17	11	10	12	10	9	154	3
Referred to ED clinic	***	***	***	***	***	7	9	14	17	13	21	13	104	2
Transferred to other health care provider	7	***	11	9	13	5	10	10	***	6	***	5	84	2
Left ED before being treated	***	***	14	6	8	***	***	***	***	***	10	***	53	1
Referred to other out-patient clinic	***	***	5	8	***	***	5	7	7	***	***	***	51	1
Left ED - refused treatment	***	***	***	***	***	***	***	***	***	***	***	***	***	0
Other	***	***	***	***	***	***	***	***	***	***	***	***	***	0
Total	360	467	573	432	623	448	517	476	496	431	370	256	5449	100

Published March 2013

Johnathan Rooney (TIIG officer)

Centre for Public Health, Faculty of Health and Applied Social Sciences, Liverpool John Moores University

2nd Floor, Henry Cotton Campus, Liverpool, L3 2ET

Tel: 0151 231 4539 Email: j.rooney@ljmu.ac.ukWebsite: www.tiig.info (please note all data requests should be made through the TIIG website)

¹ Previous reports include data from the Minor Injury Unit. These data are no longer housed by Ormskirk's information team but by the PCT and therefore cannot be included in this report.

² *** Please note that all numbers less than five have been suppressed in line with patient confidentiality and if there is only one number in a category then two numbers will be suppressed at the next level (e.g. <6) in order to prevent back calculations from totals.

³ Due to low numbers firework injuries have been included under 'Other injury.'

⁴ GP=general practitioner.

⁵ Due to low numbers injuries sustained at work have been included under 'Other' location.